

CORRECTION

Metabolite Profiling of Tomato (*Lycopersicon esculentum*) Using ^1H NMR Spectroscopy as a Tool To Detect Potential Unintended Effects Following a Genetic Modification, by Gwénaëlle Le Gall, Ian J. Colquhoun,* Adrienne L. Davis, Geoff J. Collins, and Martine E. Verhoeyen. *J. Agric. Food Chem.* 2003, 51, 2447.

Figure 4 was inadvertently duplicated as Figure 3. The correct Figure 3 and its caption are below.

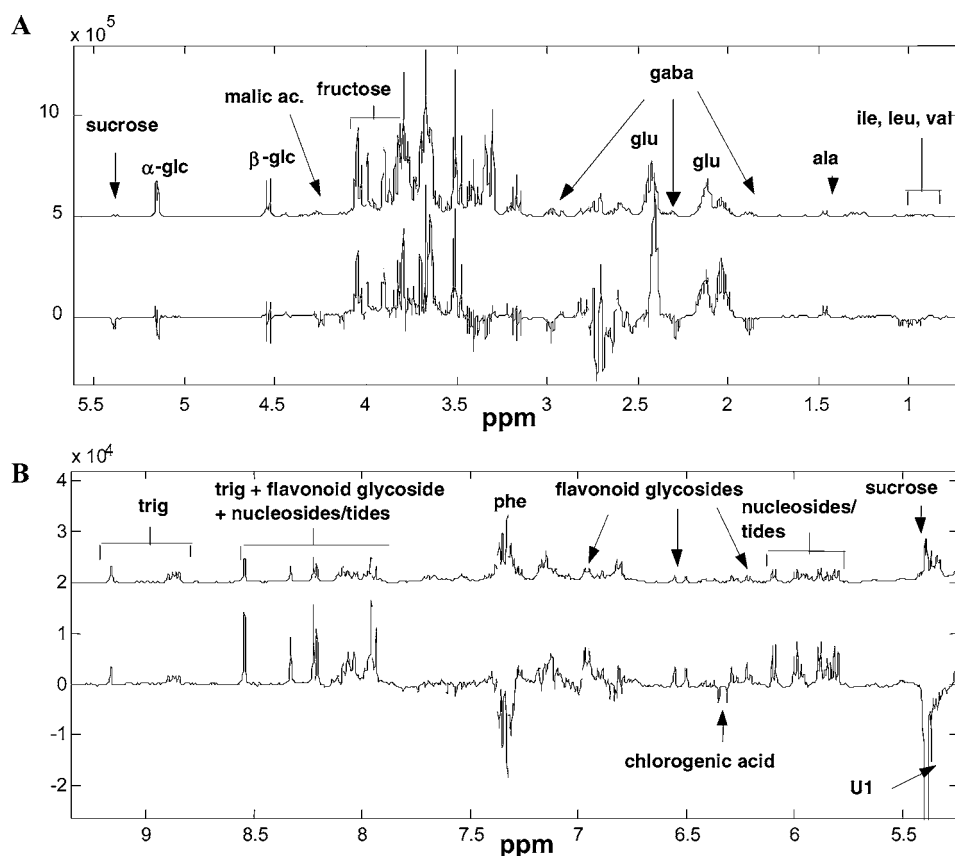


Figure 3. PLS loading 2 (lower line) and red transgenic mean spectrum (upper line): (A) high- and mid-field regions; (B) low-field region. See caption of Figure 1 for key assignment. Vertical scales refer to the loading trace.

JF040163X

10.1021

Published on Web 04/13/2004